

# Welcome to Year 1 Armah Class

Our class is named after the scientist **Charlotte Armah**. She leads experiments to learn whether eating particular foods, especially broccoli, can protect us from diseases.

*Can broccoli be a superhero?*



# Who's Who

Teacher:

Miss Paterson



Teaching assistants:

Mrs Lacey

Miss Scriver



# Key times

## Doors open at 8:35am until 8:55am

Please drop your child off at the outside door of their classroom. It is useful to arrive in good time if possible as we have learning activities out to complete before the register.

## KS1 break is at 10:15am

KS1 have healthy snacks of fruit or vegetables provided daily - if your child brings their own snack please make sure it is a piece of fruit or vegetable only.

## KS1 lunch is at 11:45am

All pupils in KS1 can have a free school meal - choose from the daily hot option, a baguette or a jacket potato with a choice of filling.  
Children may bring a packed lunch from home if they prefer.

## Pick up is at 3:00pm - gates open at 2:55pm

In KS1 your child will be called once their adult is seen waiting outside the classroom.

## A range of clubs run from 3:00 - 4:00pm

These will be allocated each half-term - keep an eye out for the booking letter. 😊

# Transition to Year 1

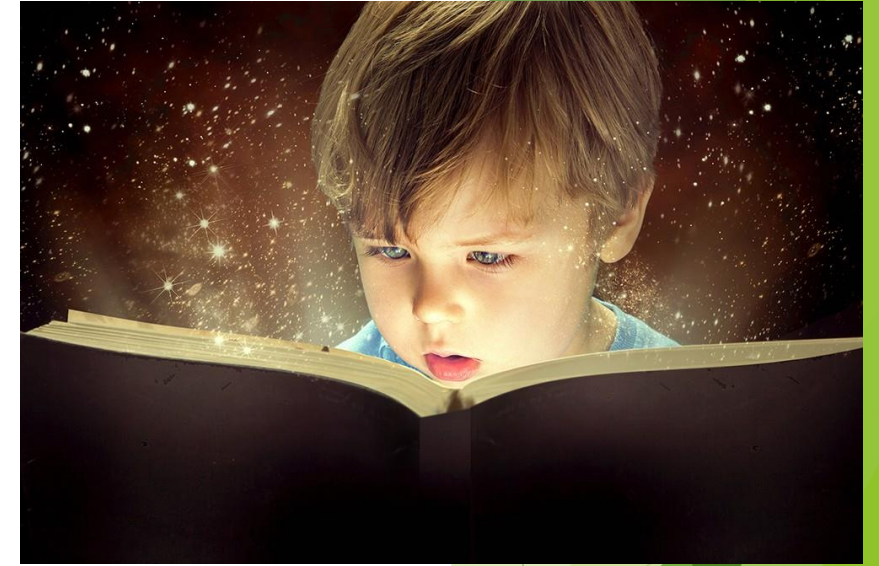
- ▶ Learning in reception is play-based. Play-based learning will carry on for at least the first two half-terms in Year 1 to support children with the transition.
- ▶ After Christmas, the learning in Year 1 becomes more formal and adult-directed. The transition from play-based learning to more formal learning is very gradual.
- ▶ Talk positively about the move to year 1 with your child. For example, instead of saying things like, 'You'll have to work a lot harder in year 1', say, 'It will be exciting to learn about new things, won't it?'
- ▶ In Year 1 your child's learning will be recorded in exercise books. Don't worry, you will have plenty of opportunities to look at these throughout the year. Remember to look at the newsletter every week too, which will tell you more about the learning in Year 1.

# Homework

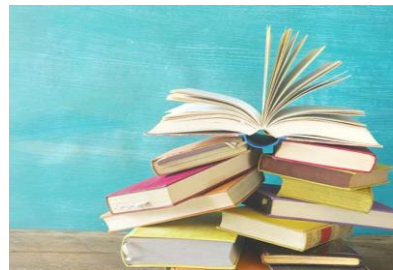
- In Year 1 we try to keep homework to a minimum, but it really does make such a difference to your child's progress if you support their learning at home where you can.

The expectations are:

- Daily reading  
(aim for one or more pages a day)
- During the first term we will also introduce online Maths facts practice via Numbots  
(once started, aim for 3 games a week)



# Reading / Phonics







- ▶ We will continue to learn new phonic sounds for reading in Year 1. We will have phonics lessons daily. For more information and resources about our phonic programme please see: <https://www.littlewandlelettersandsounds.org.uk/resources/for-parents/>
- ▶ We will also continue to practise Common Exception Words or “tricky” words where the spelling pattern does not easily match learned phonics.
- ▶ The children will also make predictions, recall the main events in a narrative, ask questions and express opinions about stories.
- ▶ The best way to support your child with phonics is by reading lots! Listen to your child read everyday, but remember to read stories to your child as well.
- ▶ The children will complete a phonics screening check at the end of Year 1 which will assess their phonic knowledge- this is nothing to worry about.

We're teaching every child to read with



A complete SSP validated by the Department for Education

Section 2		Section 2	
brend		label	
throst		vanish	
stret		blossom	
spraw		thankful	



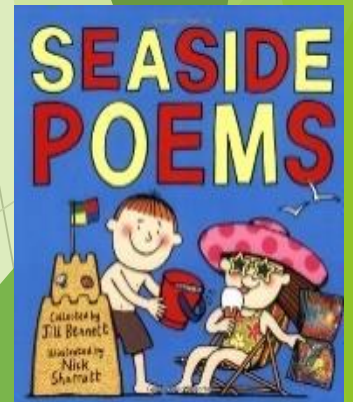
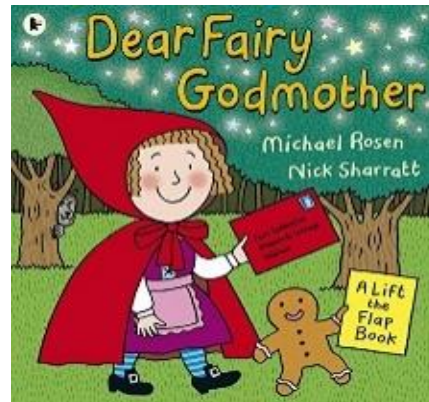
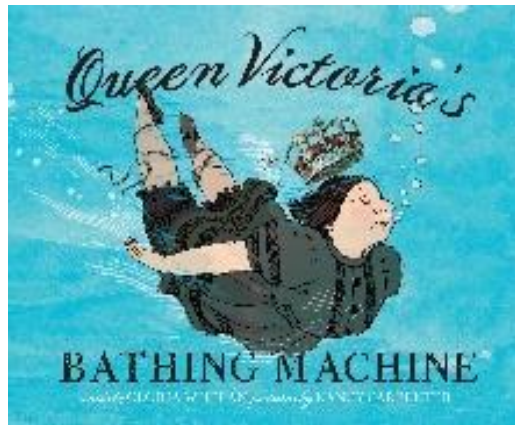
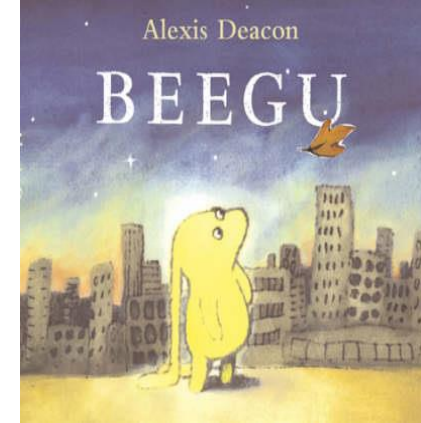
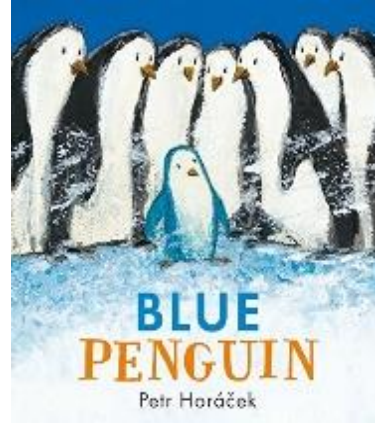
# Writing

- ▶ In Year 1, these are the areas we will focus on in writing:
  - ▶ Sit correctly at a table, holding a pencil comfortably and correctly
  - ▶ Finger spaces
  - ▶ Full stops
  - ▶ Capital letters
  - ▶ Join clauses using 'and'
  - ▶ Use -ing and -ed endings
  - ▶ Begin to use question marks and exclamation marks

Dear Blue Fish  
I ~~am~~ am very sorry  
that ~~I~~ I have been so  
unkind and I fiteel  
very very very sorry  
I ~~went~~ went to a Octpl.  
sed side giv away my  
Scals ~~I~~ was filing  
lick I shoud be the  
the byetfisl.

If you Polow this  
instrucsns and you will  
have a crab.  
How to make an  
clay crab.  
• First for a clay  
crab's body • Then  
paint the <sup>plaste</sup> spoons and  
then poosh the 4  
Spoons in Softloy  
• A & R a smittle  
fas... then ~~let~~ let it  
dray. Then paint it oring  
Can you make these?

These are a few of the books we will be using to inspire our writing this year:

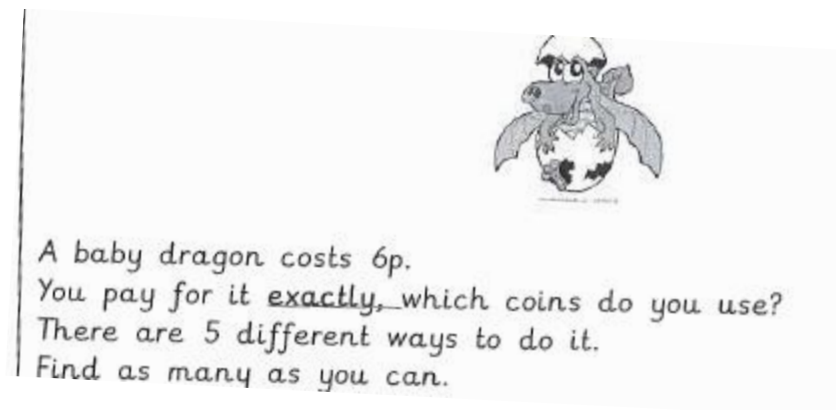
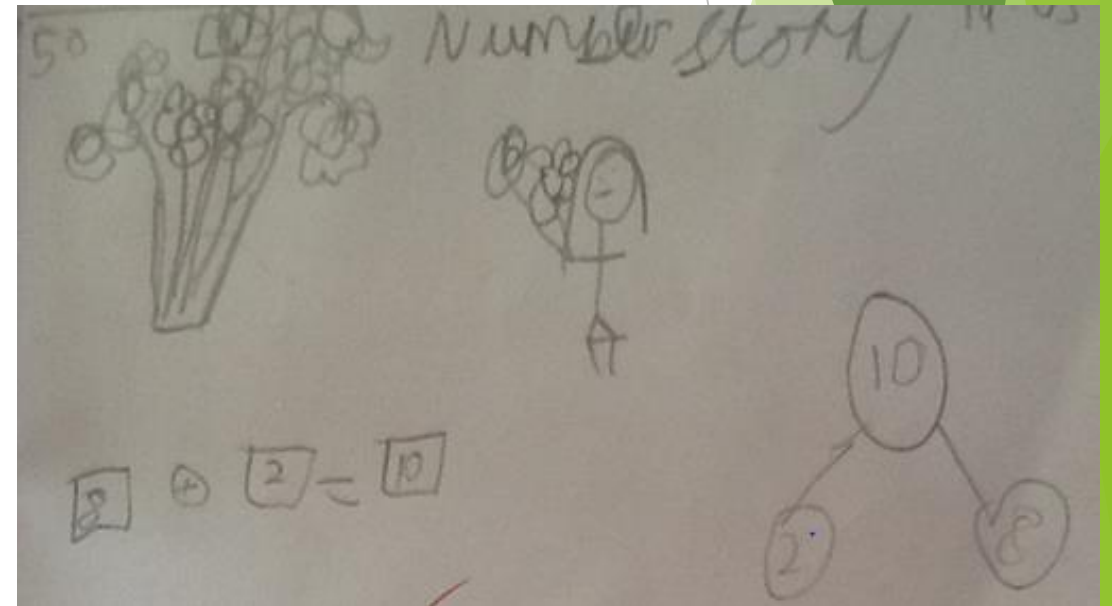
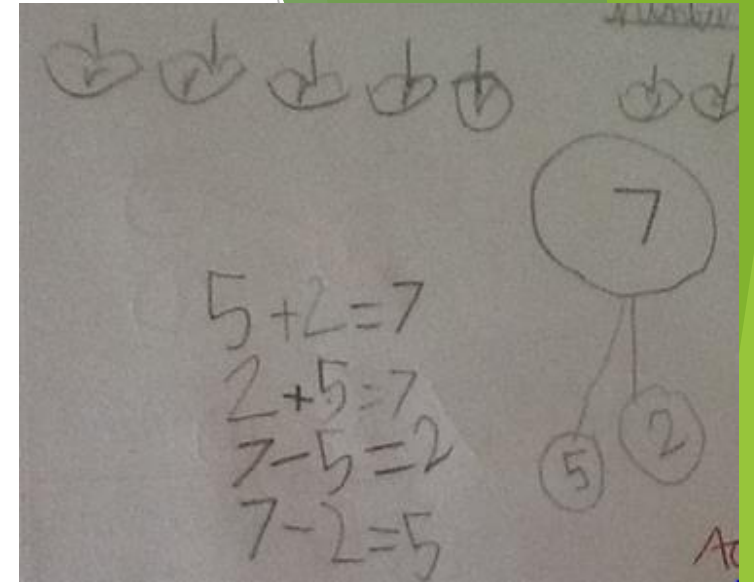




# Maths

In Year 1 children will learn to:

- ▶ Count forwards and backwards to 100.
- ▶ Add and subtract one-digit and two-digit numbers to 20.
- ▶ Count in 2s, 5s and 10s.
- ▶ Recognise and find half and quarter of an object, shape or quantity.
- ▶ Recognise common 2D and 3D shapes.
- ▶ Measure and compare mass, volume and height.
- ▶ Tell the time to the hour and half past the hour.



# A range of resources



We will use a wide range of practical resources to support our work in Maths throughout the year.

This helps children to create a strong visual image of what the maths they are doing represents.

# Wider curriculum

- Our topics this year will include:



Explorers: The moon landing



Our local area

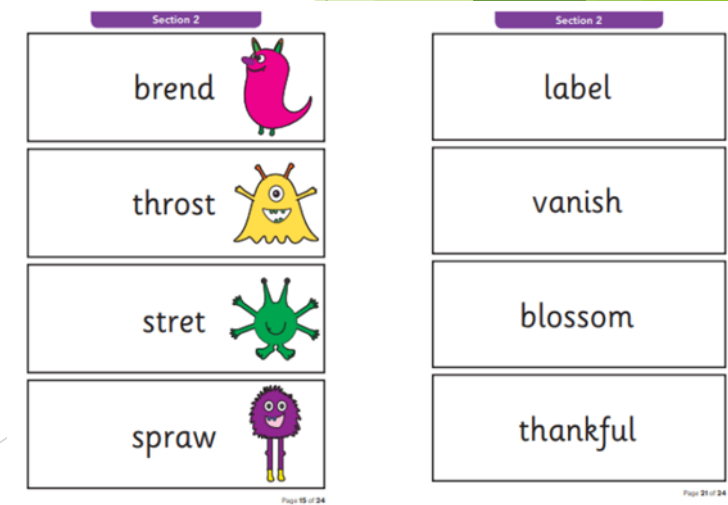


The seaside

- Year 1 will be taught Science, History, Geography, Music, Computing, PSHE, RE, Art, DT, and PE.

# Assessment

- ▶ We assess the children throughout the year taking into account their work in books and their contributions in class.
- ▶ There are **two formal parents' evenings** in the Autumn and Spring terms; these are an opportunity to discuss progress, successes, areas for development and strategies moving forward alongside any pastoral areas. Your child's individual targets will also be shared with you at these meetings.
- ▶ There is an additional open evening for parents in the Summer term to visit your child's current class teacher and meet the new teacher for the coming year.
- ▶ Formal reports are produced during the Summer term and will give an overview of your child's attainment in all subjects, a personal comment from the teacher and Headteacher, and targets for the year ahead.
- ▶ Towards the end of Year 1, the class will complete a phonics screening check. This involves reading 40 words (20 real words and 20 pseudo words).





# Communication

- ▶ Please contact the class teacher first with any questions or worries.
- ▶ For short questions / messages:
  - catch us at drop-off or pick-up times,
  - use the class email address [year1@woottonpri.iow.sch.uk](mailto:year1@woottonpri.iow.sch.uk) (8:30 - 4:00),
  - pop a note into the reading diary for any non-urgent queries.
- ▶ For longer conversations:
  - please arrange with the class teacher to meet after school or talk on the phone.
- ▶ Our weekly **newsletter** includes an update from each teacher on what the children have been learning alongside important messages from the Headteacher.
- ▶ The **school facebook page** also celebrates learning each week and often includes photographs of the children enjoying their lessons and educational visits.
- ▶ Please keep the office updated with your contact details so you don't miss any important messages 😊



# We are looking forward to a fantastic year in Armah Class 😊

Please feel free to ask any questions now, pop  
them on a post-it, or in a email.

Thank you!

